

Bodie Island Mitigation Site

2025 Annual Report Summary

2025 Treatment Summary

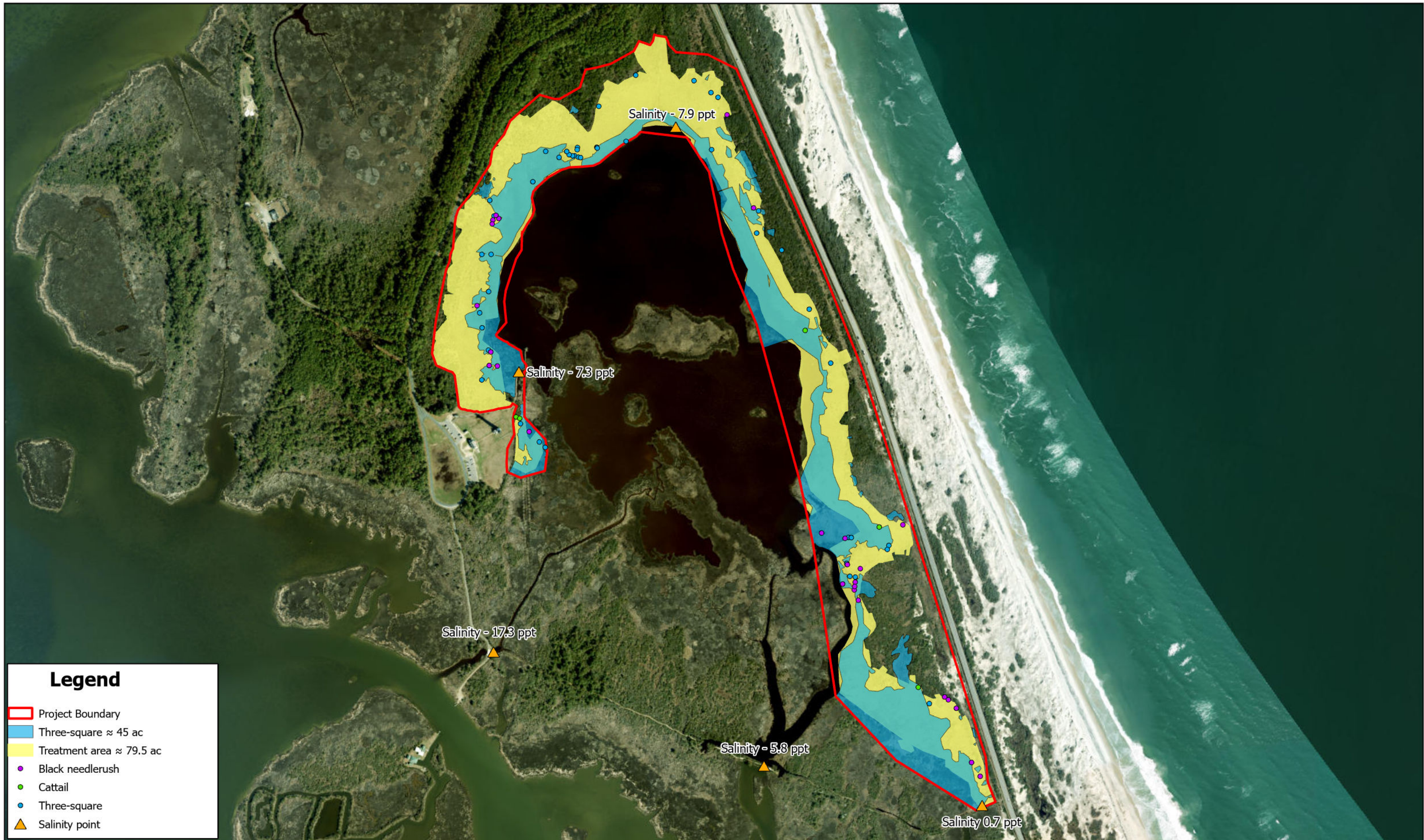
- Herbicides - **Glyphosate** (Roundup Custom® & AquaMaster®) & **Imazapyr** (Imazapyr 2SL®).
- Spray Concentrations - **Aerial spray**: Imazapyr 2SL®/AquaMaster®/Methylated Seed Oil (MSO) (17%/17%/1%) per acre. **Hand spray (Spring)**: Imazapyr 2SL®/Roundup Custom®/Precision Spreader (6%/6%/2%) per acre. **Hand spray (Fall)** hand spraying treatment consisted of Imazapyr 2SL®/AquaMaster®/Precision Spreader (6%/6%/2%) per acre.
- **Hand spraying (spot treatments)** conducted in sparse *Phragmites* areas including areas adjacent to boardwalk and along woodline surrounding marsh (**approx. 65.5 ac**).
- Unmanned Aerial System (UAS) were used to spray areas containing $\geq 50\%$ live *Phragmites* (**approx. 7.8 ac**).
- Onsite vegetation monitoring indicates live *Phragmites* **has decreased from 8% (2024) to 2% (2025)** based on vegetation monitoring (100 x 1 m² plots across site).

Modeling Results

- Modeling data (2025) was inconclusive and no longer effective at predicting *Phragmites* coverage due to low densities.
- GeoOwl no longer recommends *Phragmites* modeling for 2026 season based on 2025 poor performance and reduction of dense *Phragmites*.

2026 Spray Season

- Spring & Fall Spray (backpack) with National Park Service (NPS) staff. UAS spray if required.
- NCDOT performs final vegetation review August 2026.
- Perform agency site review Fall 2026.
- Submit final monitoring report to NPS December 2026.
- Release site to NPS January 2027 for continued maintenance contingent on agency concurrence.

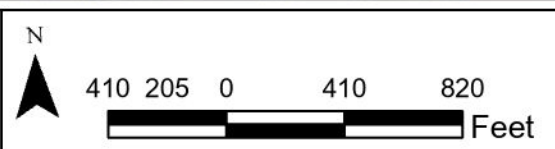


Legend

- Project Boundary
- Three-square \approx 45 ac
- Treatment area \approx 79.5 ac
- Black needlerush
- Cattail
- Three-square
- ▲ Salinity point

This exhibit is for planning purposes only and shown herein does not meet NC 47-30 Requirements and therefore is not for design, construction, or recording or transfer of title. The Exhibit was compiled from available information obtained from the sources listed below.

Sources: ESRI Online Mapping



Bodie Island Mitigation Site

Coastal Wetland Vegetation Mapping - Winter 2026

